

DAN DRYER RAILWAY



CUSTOMISING FOR THE RAILWAY INDUSTRY

With increased customer expectations to public transport, especially to rail transport, the availability and comfort of toilet facilities on board trains are of major concern to passengers.

Having comprehensive experience in developing and manufacturing rail compliant washroom products and a vast knowledge of the many complex standards and requirement specifications, DAN DRYER has earned a unique position as a leading European manufacturer of build-in hand dryers and baby changing stations for installation in railway carriage toilets on board rolling stock and in station buildings.

Our extensive know-how in this highly specialised field has made us a preferred supplier of complete hygiene solutions for a large number of railway projects across Europe.

To comply with the market requirements, we are introducing an updated version of the wellknown build-in hand dryer. The DAN DRYER smart build-in dryer incorporates significant improvements to make every day life easier for technical personnel and train operators.



Hygiene solutions
approved for the rail industry.
Tested by thousands
of passengers

BUILD-IN SMART HAND DRYER

Housing
2 mm aluminium plate. Unpainted or powder-coated aluminium.

Installation
Air inlet to be held free. Minimum distance to facing surface: 10 mm. The outlet nozzle can be installed in front of an outlet grill, and is designed to allow for the mounting of a flexible aluminium hose, or it can be directly connected.

Air volume
72 l/sec (4.32m3/min), measured at the outlet. A precondition for a high air volume is that the flexible hose is kept as short and as straight as possible to avoid air pressure build-up.

Motor
Fan motor with sealed ball bearings. Brushless. Humidity protected. Automatic thermal cut-out.

Heating element
Alloy filament coil mounted on a mica support in a non-inflammable cone. 2-level automatic thermal cut-out.

SMART control unit
The intelligent control unit allows the hand dryer to function exactly to your specifications. The hand dryer will keep track of the number of product activations, monitor the working status of the heating element, motor, and the system in general and automatically disable normal function if an error occurs.

IR sensor
The external IR sensor, combined with the smart control unit, enables automatic calibration of your setup, at your installation location.

Connection
Power supply – through WAGO type connector. Insulation class: Class I. Earthing of the hand dryer through the WAGO connector or externally on two 6 mm threaded grounding studs.

Functionality
Upon activation, the dryer will run until hands are removed again. The dryer allows for several customisation options. Automatic stop after 3 minutes of continuous use.

COMPLIANT TO THE FOLLOWING NORMS
EN 50121-3-2 (EMC)
EN 50155 (Electronic Eqpt)
EN 45545-2 (Fire & Smoke, HL3)
EN 61373 (Shock & Vibration, Cat. 1 Class B)
CE
RoHS



SPECIFICATIONS		MODEL 550	MODEL 560
Height excl., outlet nozzle:	246 mm	Power supply:	230 VAC
Height incl., outlet nozzle:	293 mm	Motor:	110W
Width:	297 mm	Heating element:	1500W
Depth:	122 mm	Customisation options:	Activation via IR sensor
Outlet nozzle:	Ø80 mm		Heating element in different capacities (up to 2250W)





BABY CHANGING STATION

Safety, durability, quality, and user friendliness are reasons why the BJÖRK baby changing station is a preferred solution for rolling stock toilet facilities.

The baby changing station is perfectly adapted ergonomically to provide a secure base and a comfortable work height for the parents. In addition, the unit is equipped with torsion springs to ensure a gentle opening and closing with just one hand.

The unit complies with TSI-PRM 1300/2014/EU and has a carrying capacity of up to 80 kg.

- Description**
- Changing surface in powder-coated aluminium. Axle and levers in electro-galvanised steel
 - Very strong construction providing optimum carrying capacity and long product life
 - To save space, the table folds up against the wall when not in use
 - Easy to clean

Paint
Tested to comply with EU standard EN 71-3.

- Compliant to the following rolling stock norms**
- TSI-PRM 1300/2014/EU
 - TÜV Nord Certification
 - EN 45545-2:2013 + A1:2015
 - EN 61373:2010 Category 1 Class B



SPECIFICATIONS	
Height (folded up)	782mm
Height (folded down)	322 mm
Width	552 mm
Depth (folded up)	100 mm
Depth (folded down)	751 mm



DISPENSER

Durable build-in or wall mounted dispensers for rolling stock toilet facilities.

Manual dispenser

- For build-in: No housing
- For wall mounting: Housing made of 1.5 mm brushed stainless steel, AISI 304
- Holds approx.1.2 l (1000-1200 doses)

Compliant to the following rolling stock norms

EN 45545-2 (08/2013)

EN ISO 4589-2 (06/2006)



SPECIFICATIONS	
Height	340 mm
Width	120 mm
Depth	125 mm
Depth (open)	366 mm





STATION BUILDINGS

For all railway passengers the journey starts and stops at a station, and to provide for a pleasant traveller experience it is therefore crucial that the train stations are equipped with comfortable toilet facilities as well.

Being a leading supplier and product developer of customised toilet products we offer a wide selection of sanitary products such as hand dryers, baby changing stations, waste bins, toilet roll holders, and soap and sanitiser dispensers for installation in station buildings.

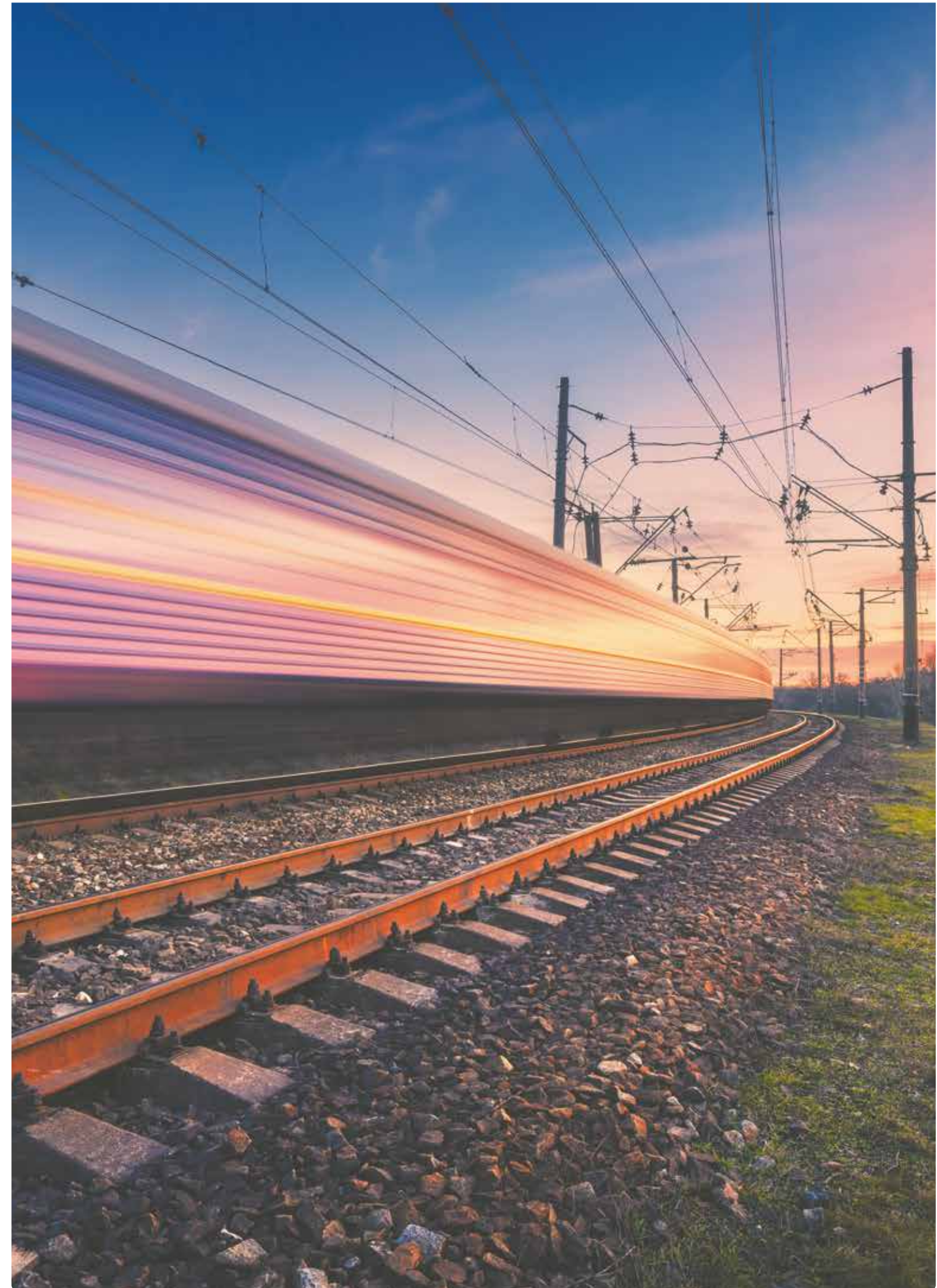
DAN DRYER TAPS is a product line consisting of sensor-operated high-speed hand dryers, soap dispensers and water faucets in an elegant slim design. Wash and dry your hands without moving from the sink, thus eliminating water dripping on the floor. A space saving solution that works for a modern look and freeing up more wall space.

The TAPS are installed in the newly renovated toilet facilities at Copenhagen Central Station.

PROJECT REFERENCES

Over the years, we have had the pleasure to supply our equipment to a range of projects around Europe in which DAN DRYER's products were specified:

- TGV Atlantique, Lacroix
- TGV Sud-Est, RISE-refurb
- Alstom TGV 2N2 Euroduplex
- Alstom Coradia/Nordwestbahn
- M6 Belgium
- Siemens Desiro Class 380 First Scotrail
- Siemens Desiro City/Thameslink
- RBS Next
- NedTrain VIRM refurbishments
- Stadler Sweden/Öresundståg AB
- Stadler Sweden/X2000
- BFG International/SLT
- Bombardier
- German Deutsche Bahn
- French SNCF
- Eurostar, UK
- Project Nightjet
- Eurotunnel



DAN DRYER A/S
Tåsingevej 2
DK - 8940 Randers SV

+45 8641 5711
info@dandryer.com
dandryer.com

